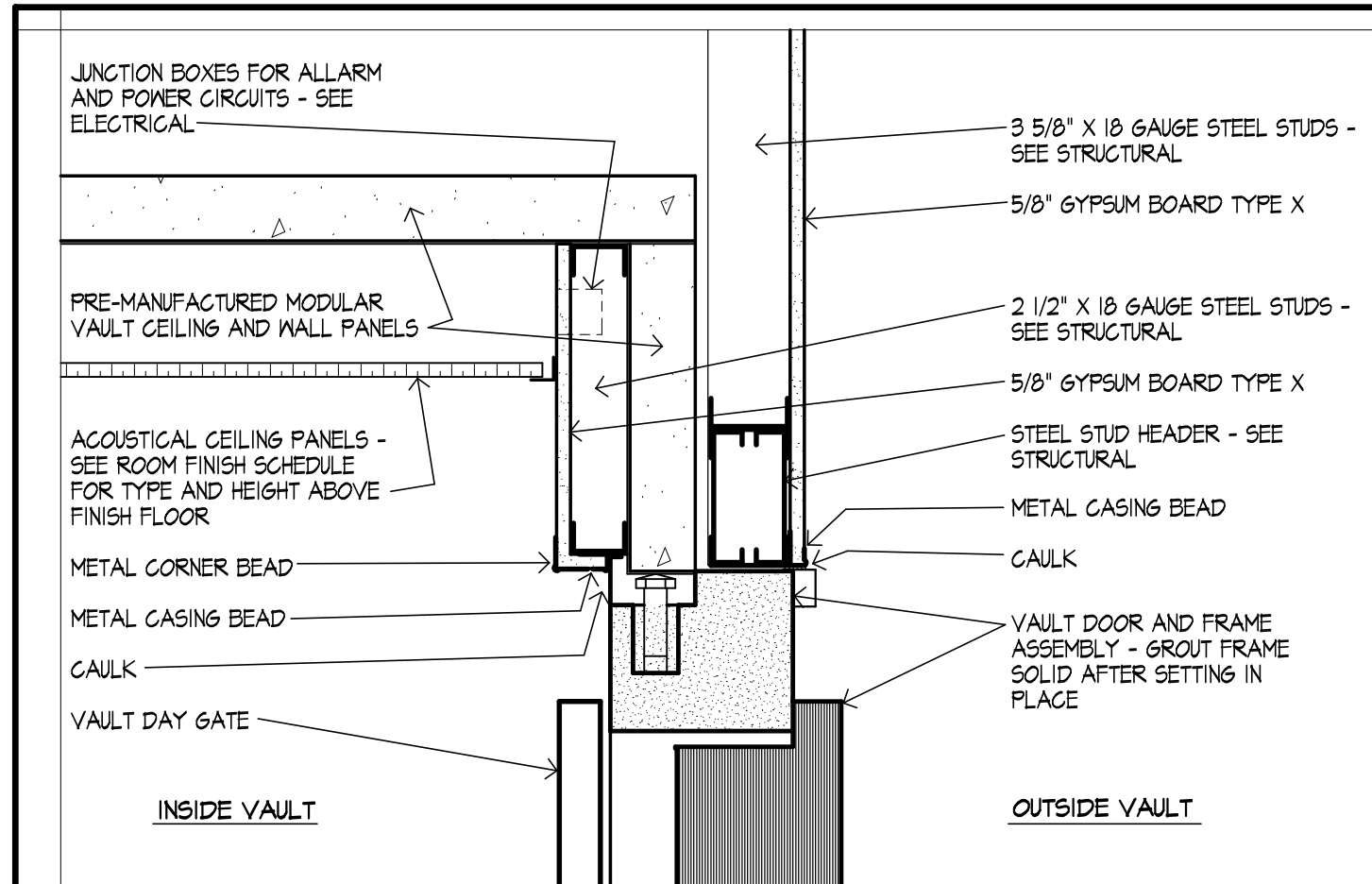
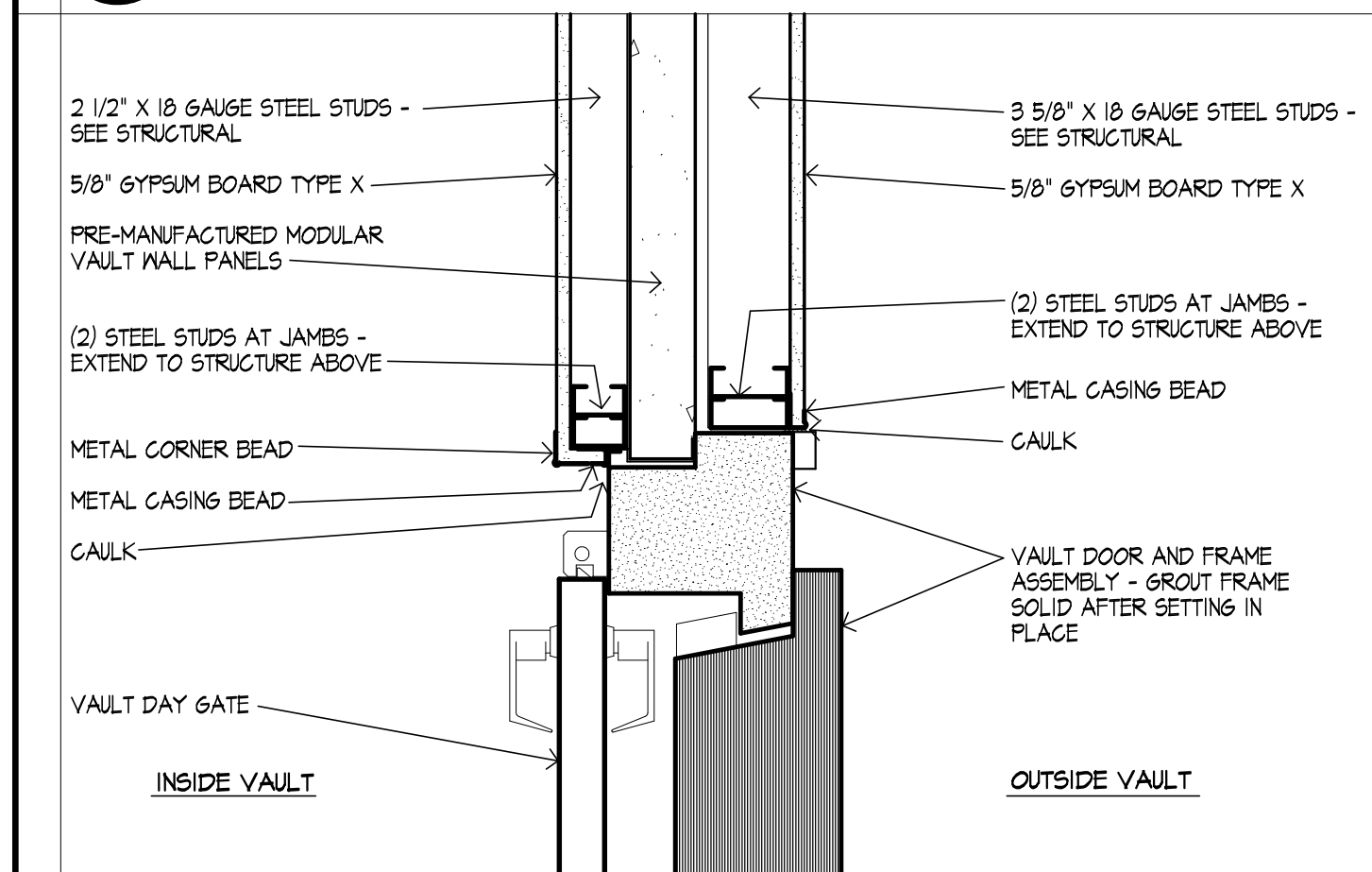


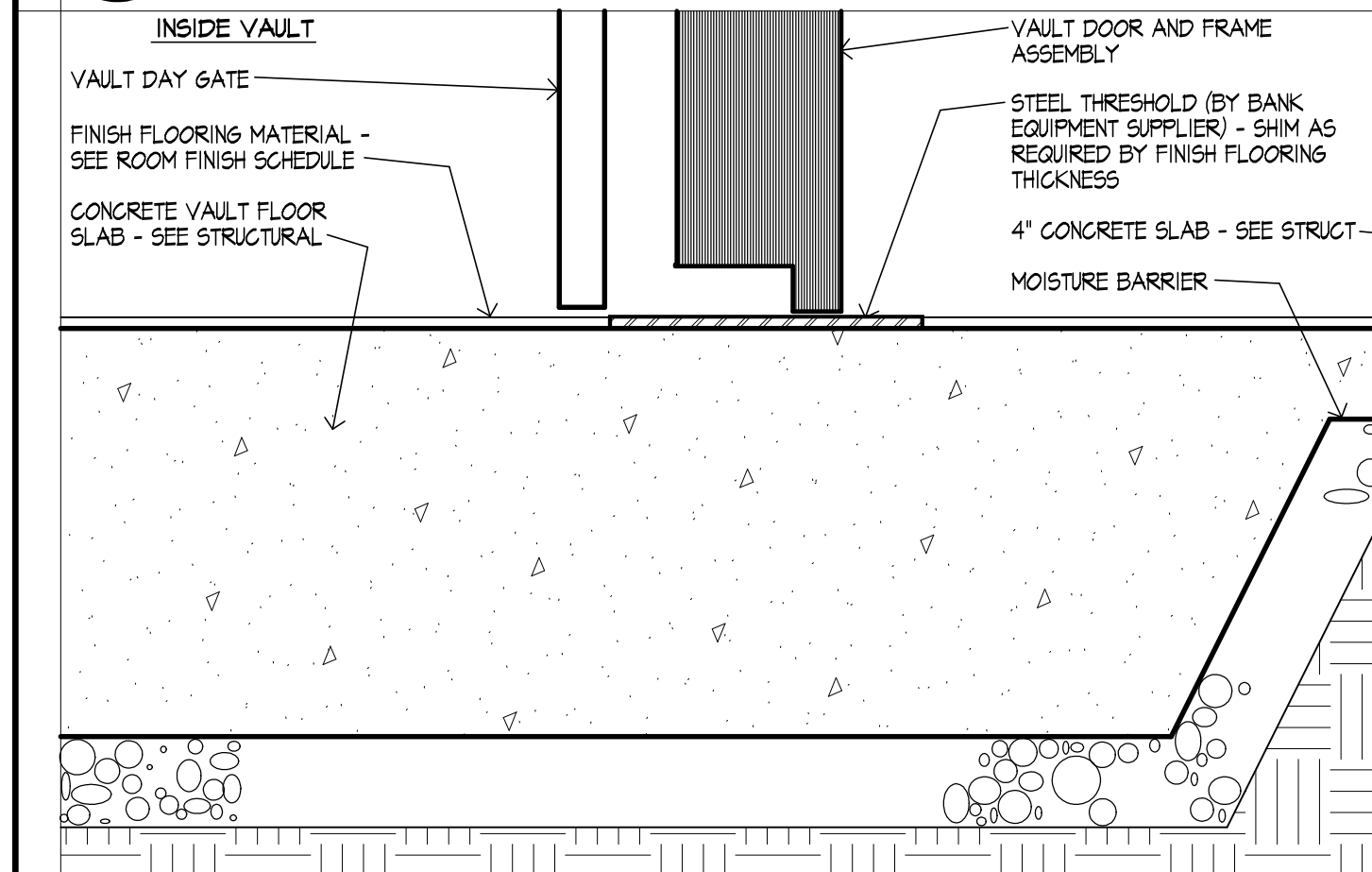
File Name: G:\2016\1612 T&F BANK DOUBLE SPRINGS\1612 WD\1612 A12 DETAILS
 Plot Date: 1/30/2018 Plot Time: 3:31 PM



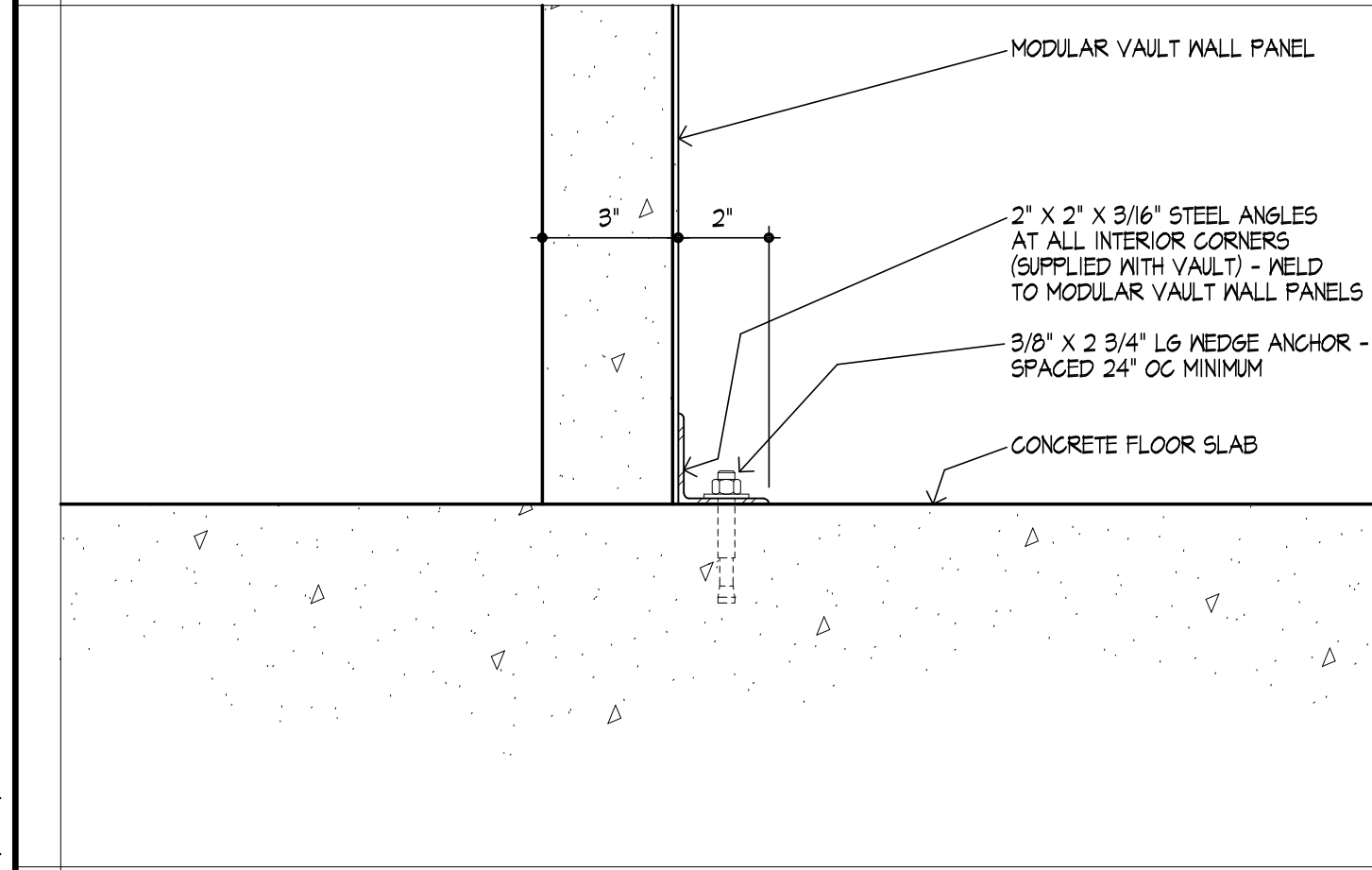
1 DETAIL HEAD - VAULT DOOR
 SCALE 1-1/2" = 1'-0"



2 DETAIL JAMB - VAULT DOOR
 SCALE 1-1/2" = 1'-0"



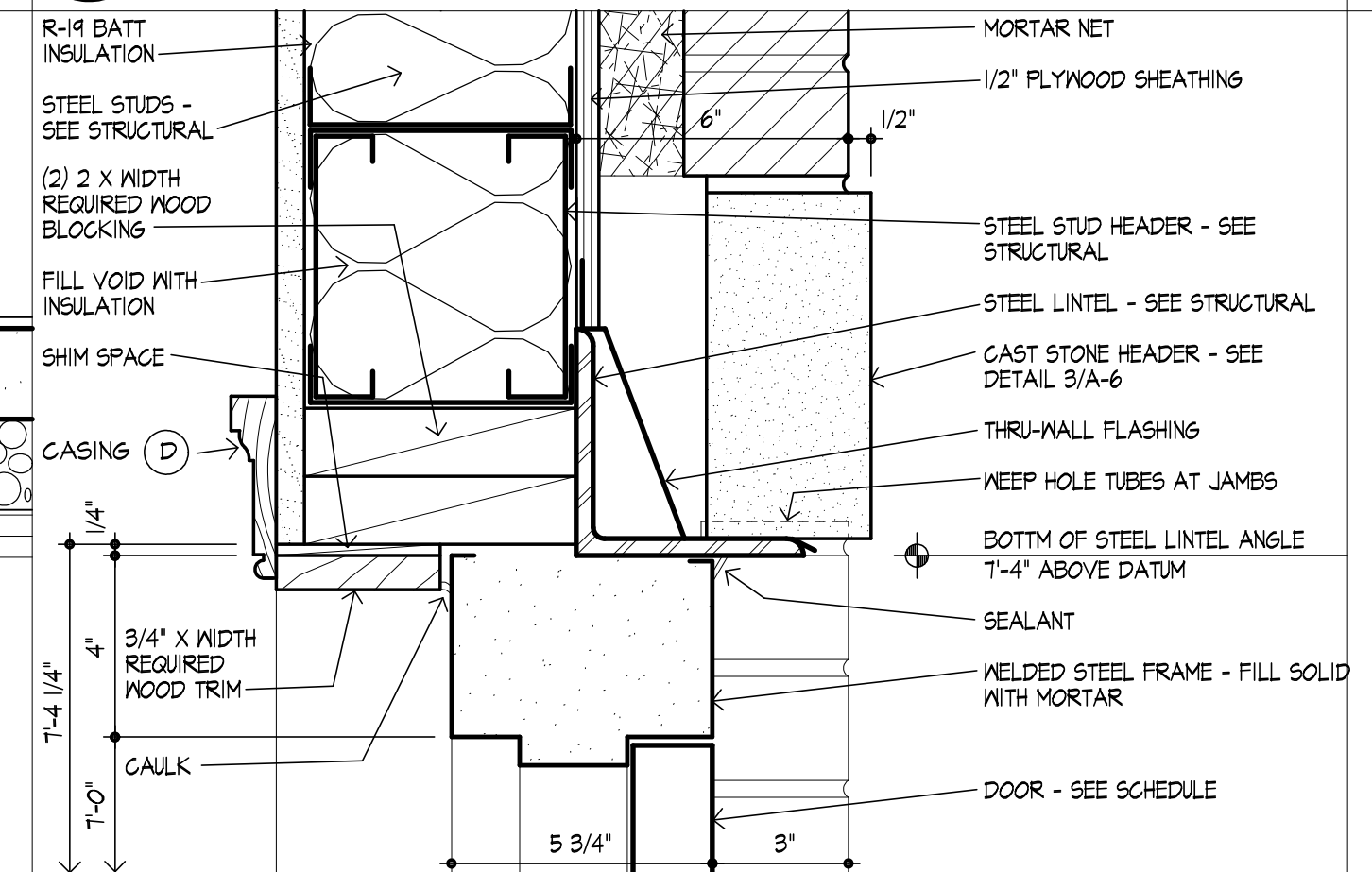
3 DETAIL THRESHOLD - VAULT DOOR
 SCALE 1-1/2" = 1'-0"



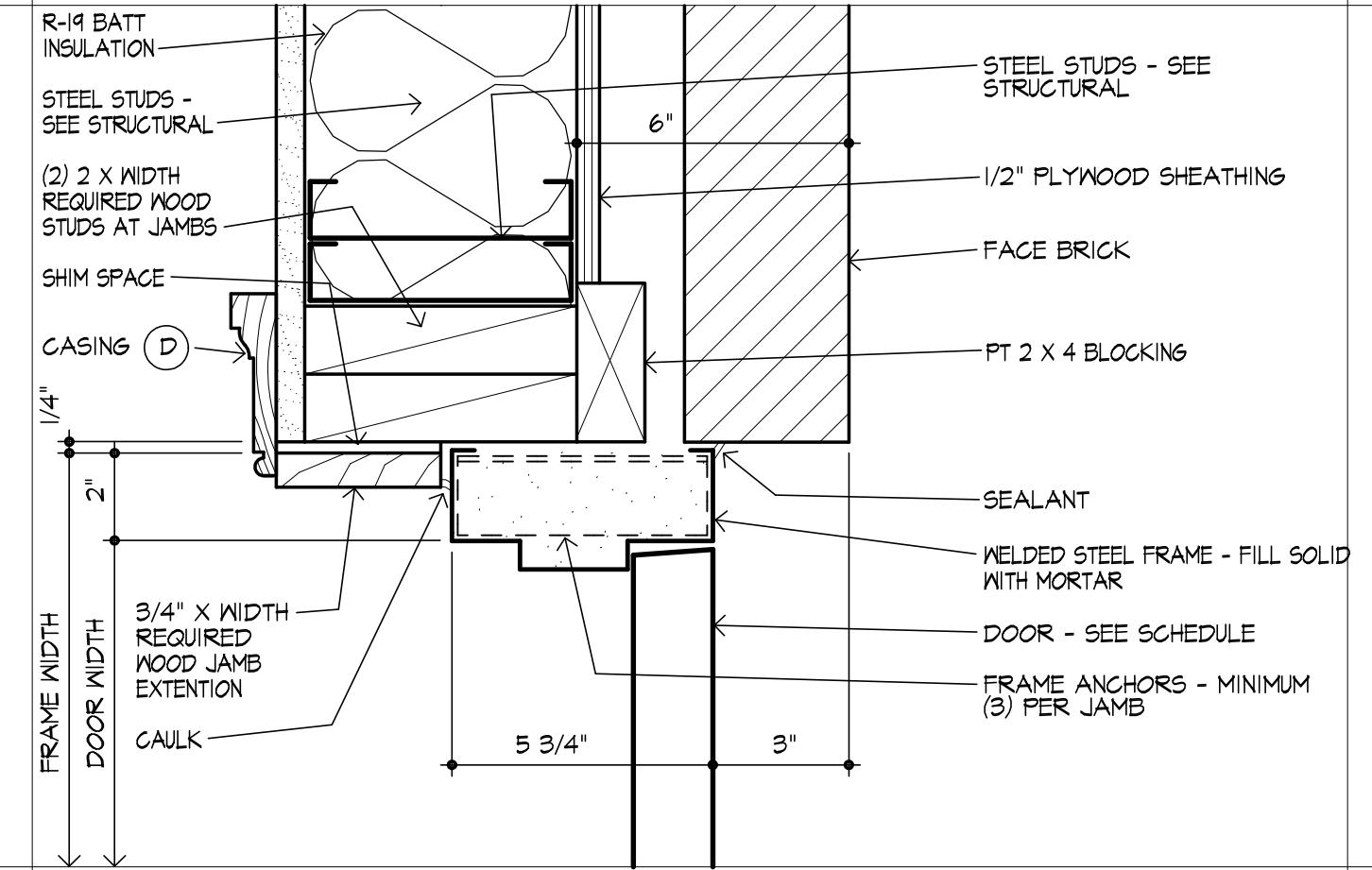
4 DETAIL MODULAR VAULT FLOOR ANCHOR PLATE
 SCALE 3" = 1'-0"

5 NOT USED

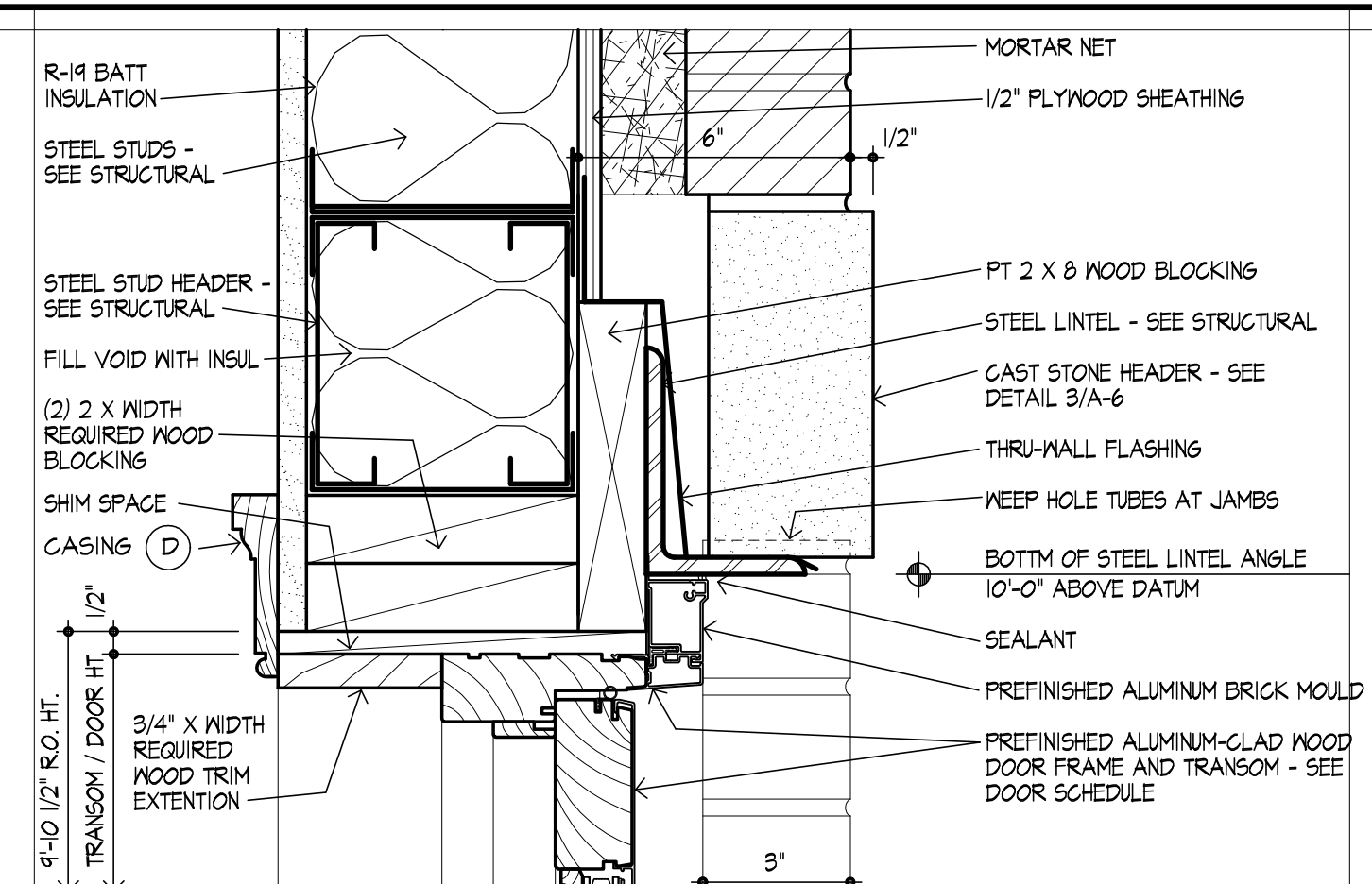
6 NOT USED



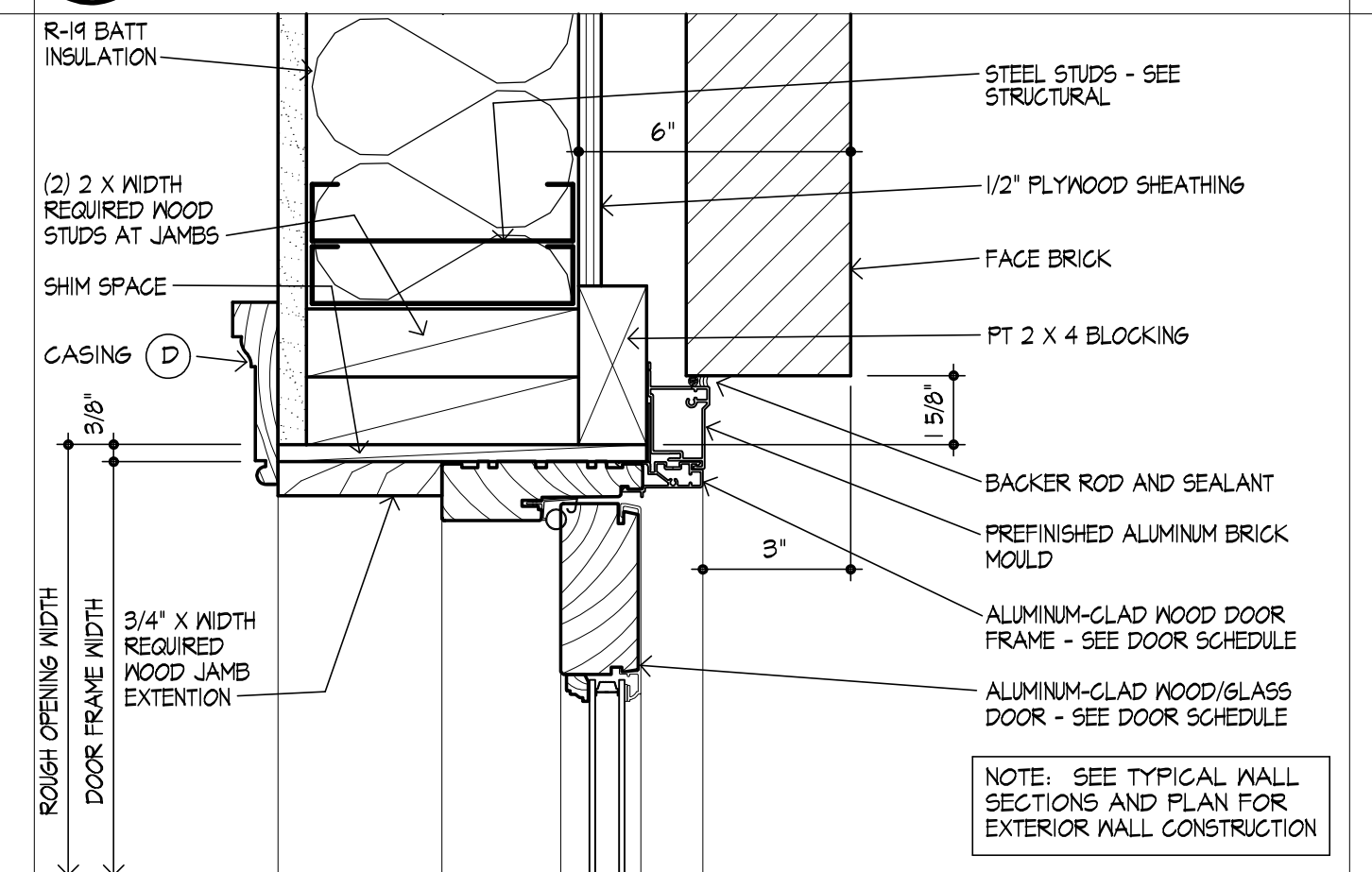
7 DETAIL DOOR HEAD - WELDED STEEL FRAME
 SCALE 3" = 1'-0"



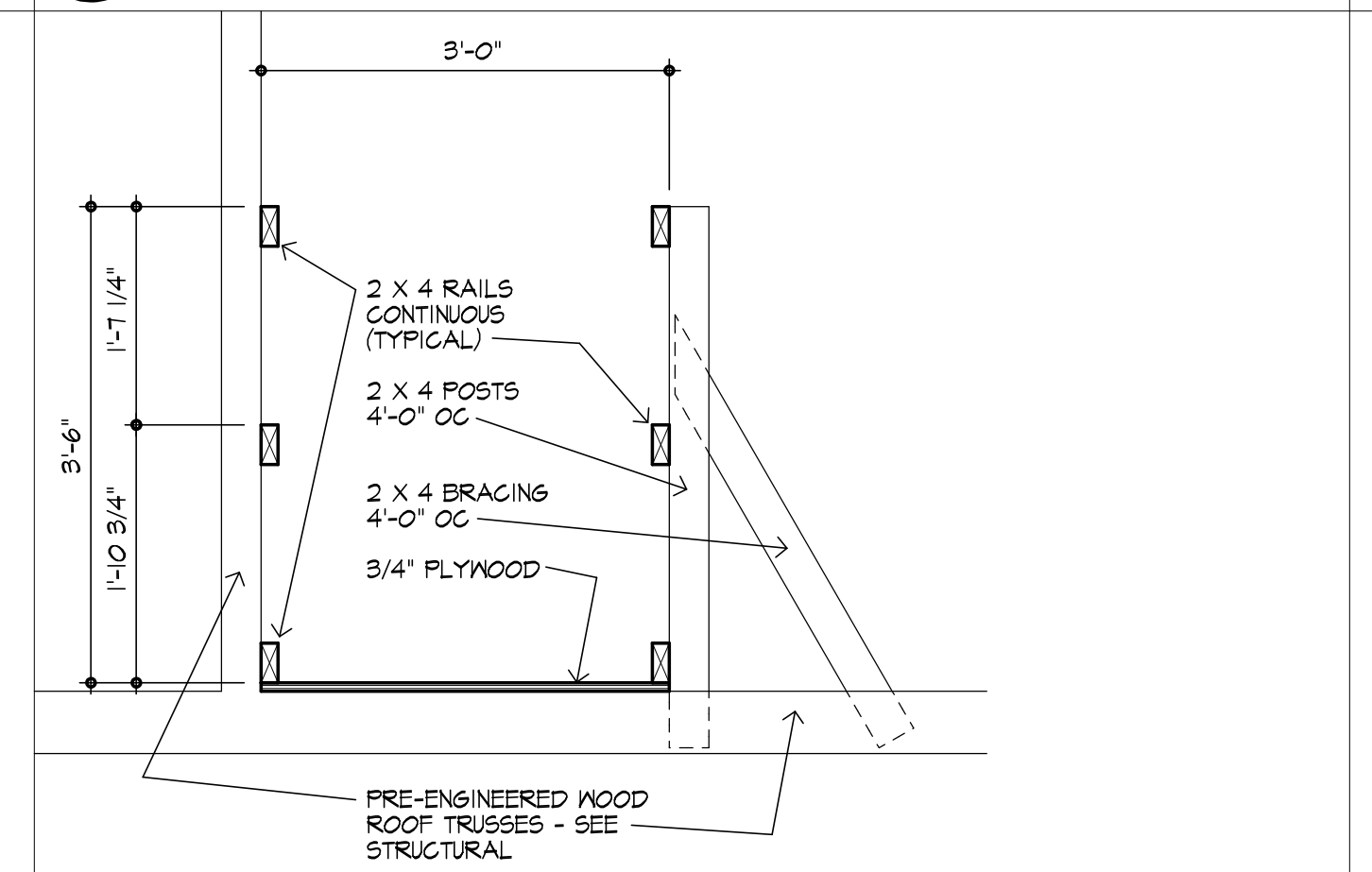
8 DETAIL DOOR JAMB - WELDED STEEL FRAME
 SCALE 3" = 1'-0"



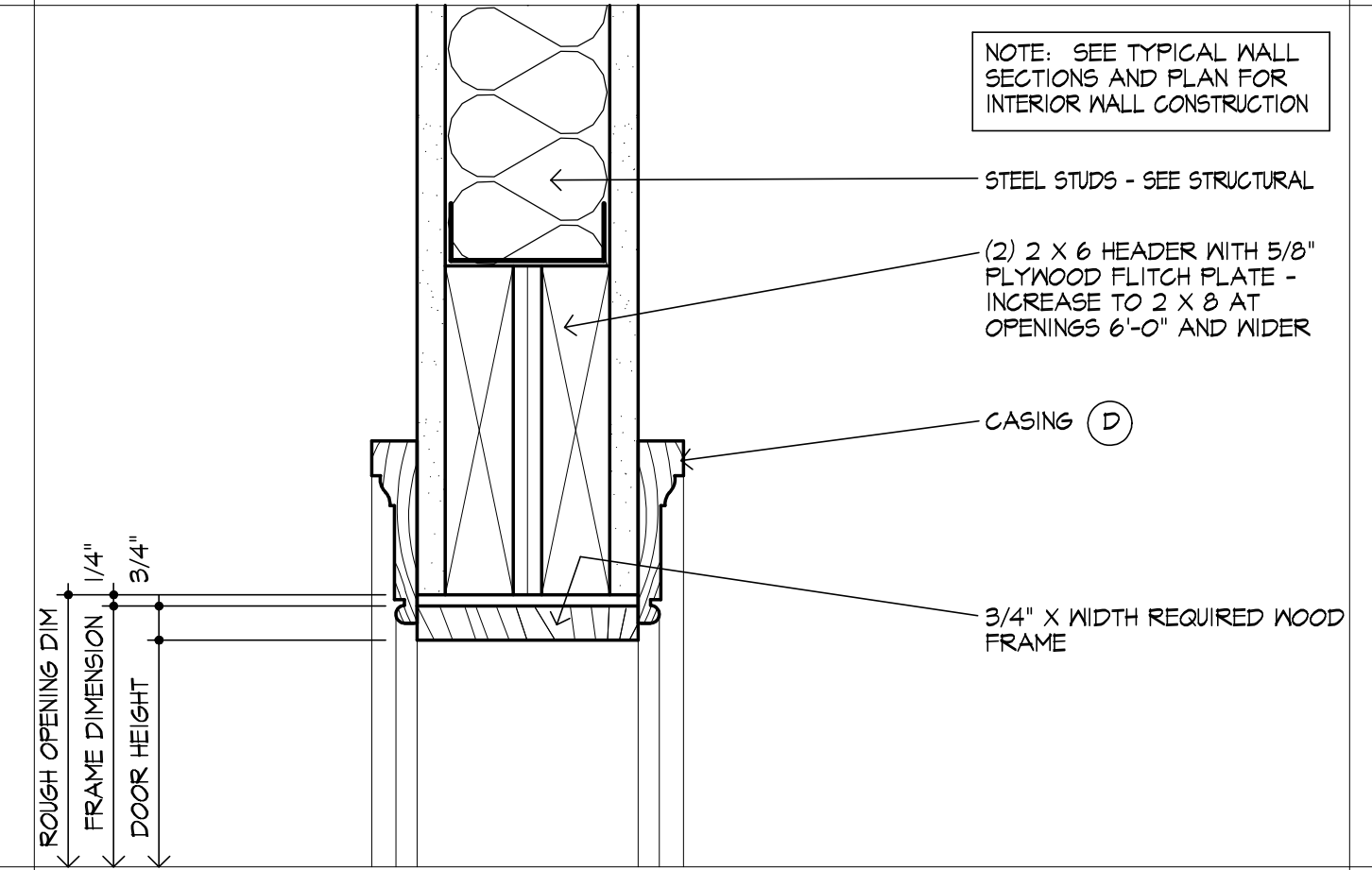
9 DETAIL HEAD - ALUMINUM-GLAD WOOD TRANSOM
 SCALE 3" = 1'-0"



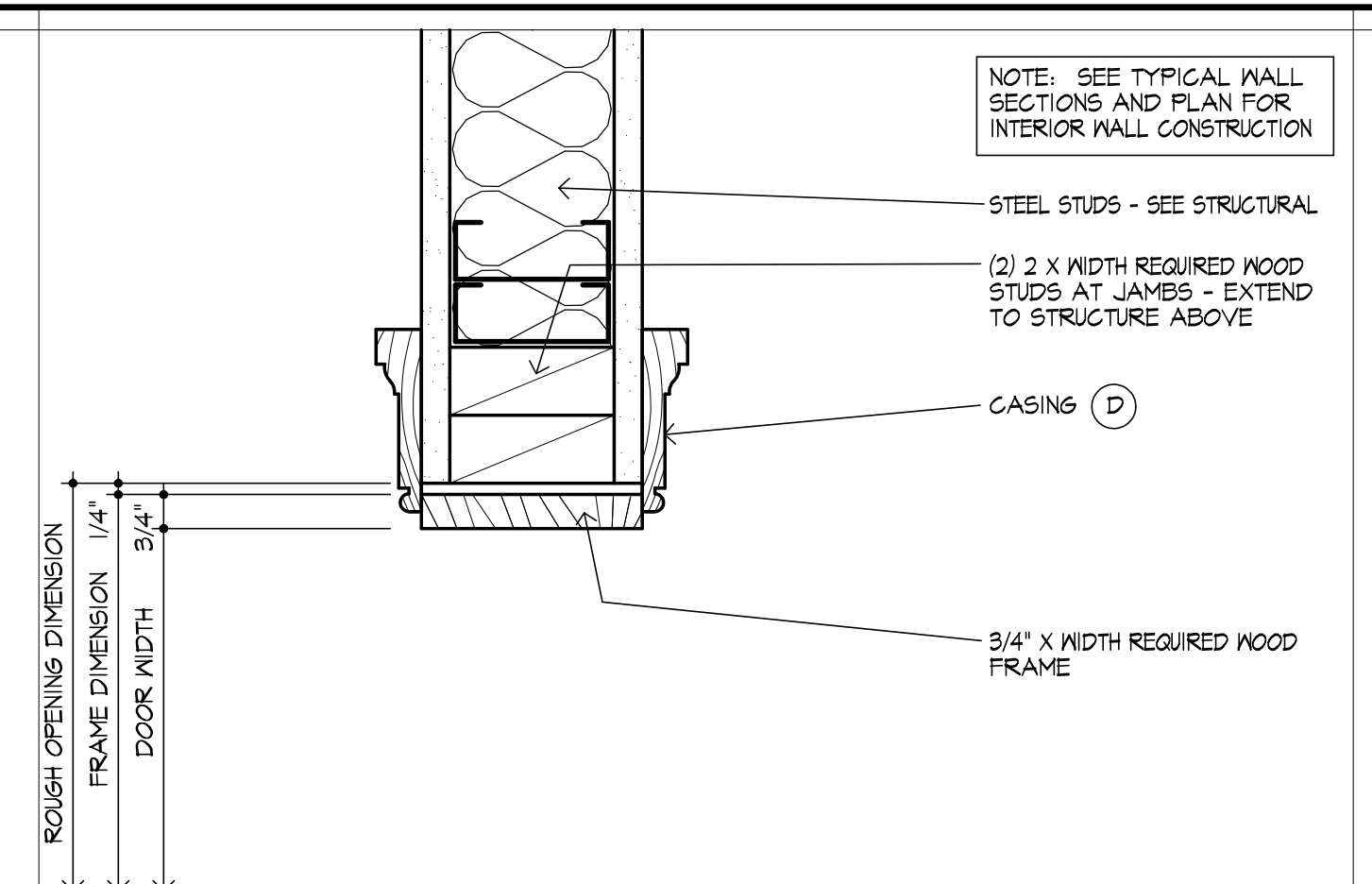
10 DETAIL JAMB - ALUMINUM-GLAD WOOD DOOR
 SCALE 3" = 1'-0"



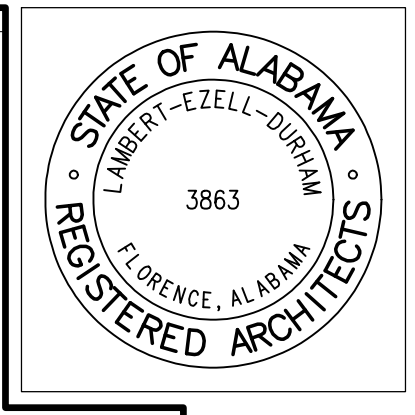
11 DETAIL CATWALK
 SCALE 3/4" = 1'-0"



12 DETAIL CASIED OPENING HEAD - INTERIOR WOOD FRAME
 SCALE 3" = 1'-0"



13 DETAIL CASIED OPENING JAMB - INTERIOR WOOD FRAME
 SCALE 3" = 1'-0"



LAMBERT • EZELL • DURHAM
 ARCHITECTURE, LLC
 FLORENCE, ALABAMA 36631
 P.O. BOX 984 401 EAST COLLEGE ST.
 TELEPHONE (256) 161-1100
 WWW.LEDARCHITECTURE.COM

BRANCH BANK FOR
TRADERS AND FARMERS BANK
 DOUBLE SPRINGS, ALABAMA

JOB NO: 1612 DATE: 11/30/17
 DRAWN: GAS, JNH REVISIONS:
 CHECKED: CED

DRAWING TITLE
DETAILS
 DRAWING NUMBER
A-12
 OF 15