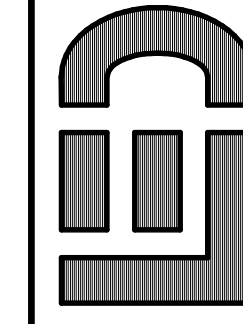
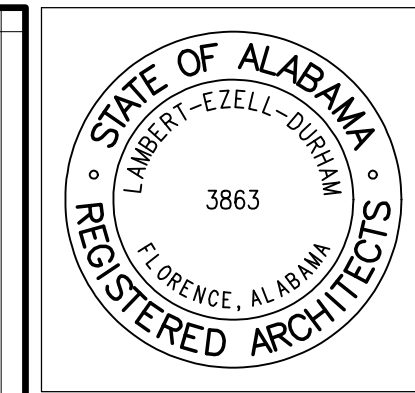


ALL INTERIOR ELEVATIONS ON THIS SHEET ARE DRAWN TO 3/8" = 1'-0" SCALE

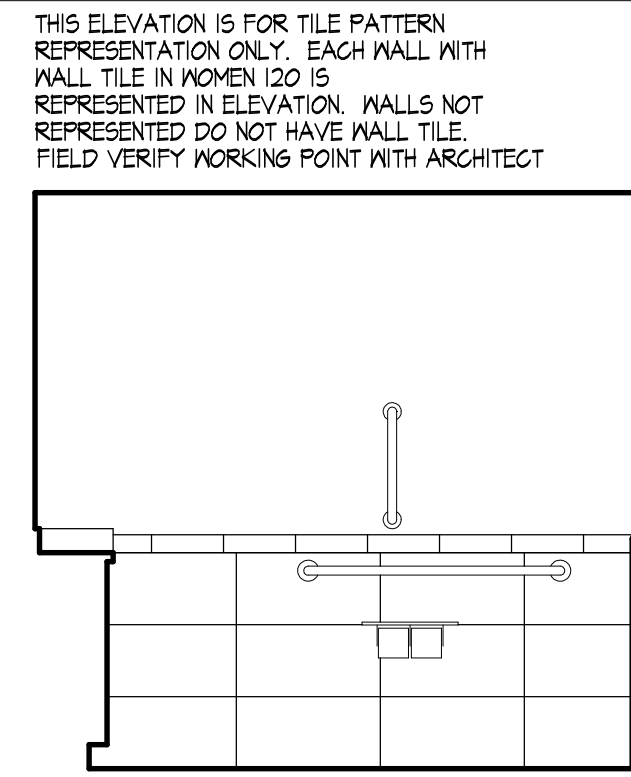


LAMBERT • EZELL • DURHAM
ARCHITECTURE, LLC
P.O. BOX 934 401 EAST COLLEGE ST.
FLORENCE, ALABAMA 36631
WWW.LEDARCHITECTURE.COM
TELEPHONE (256) 161-1100

BRANCH BANK FOR
TRADERS AND FARMERS BANK
DOUBLE SPRINGS, ALABAMA

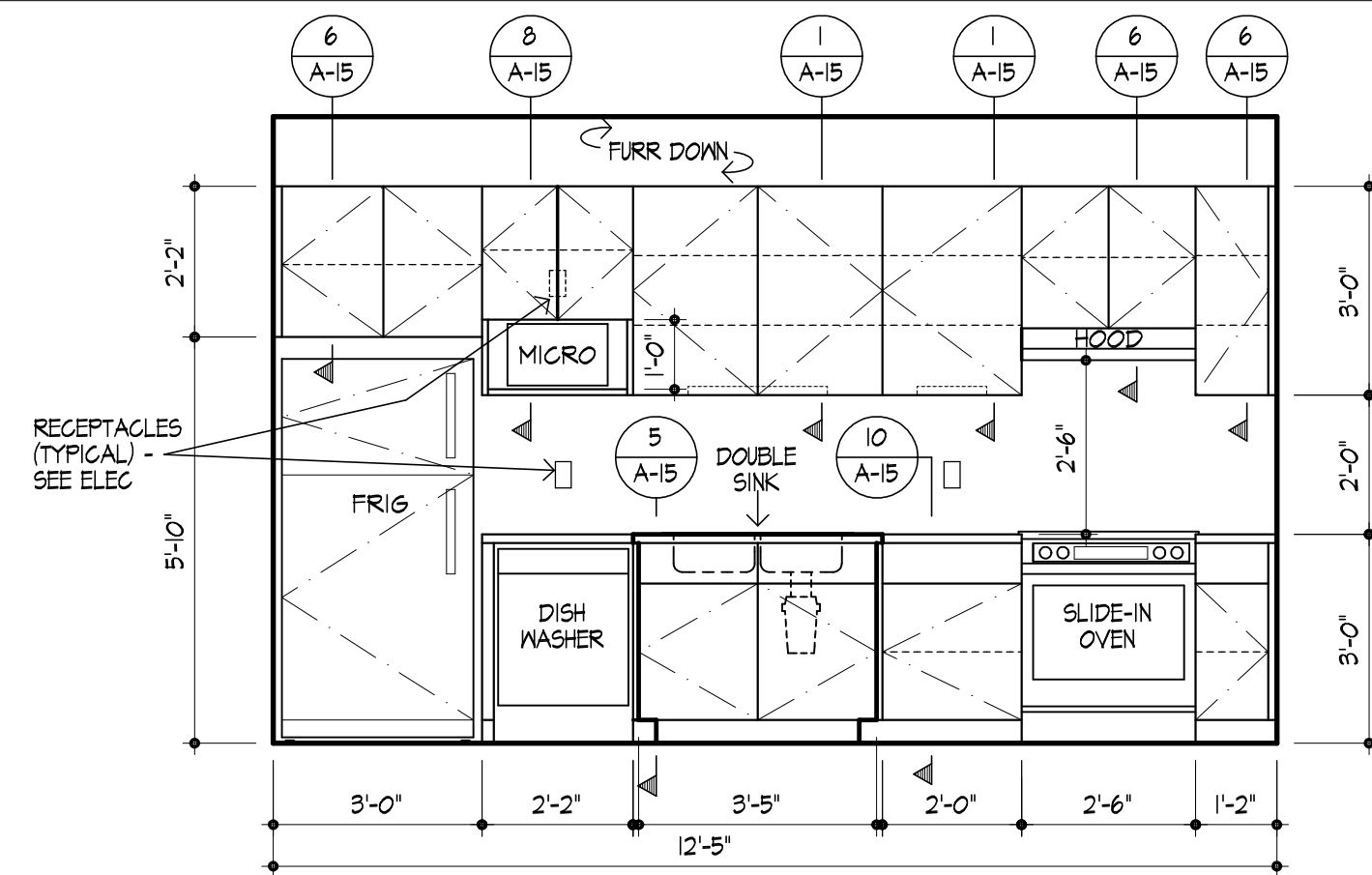
JOB NO: 1612
DATE: 11/30/17
DRAWN: JBK
CHECKED: CED
REVISIONS: REVISION

DRAWING TITLE
INTERIOR ELEVATIONS
AND MILLWORK DETAILS
DRAWING NUMBER
A-14
OF 15



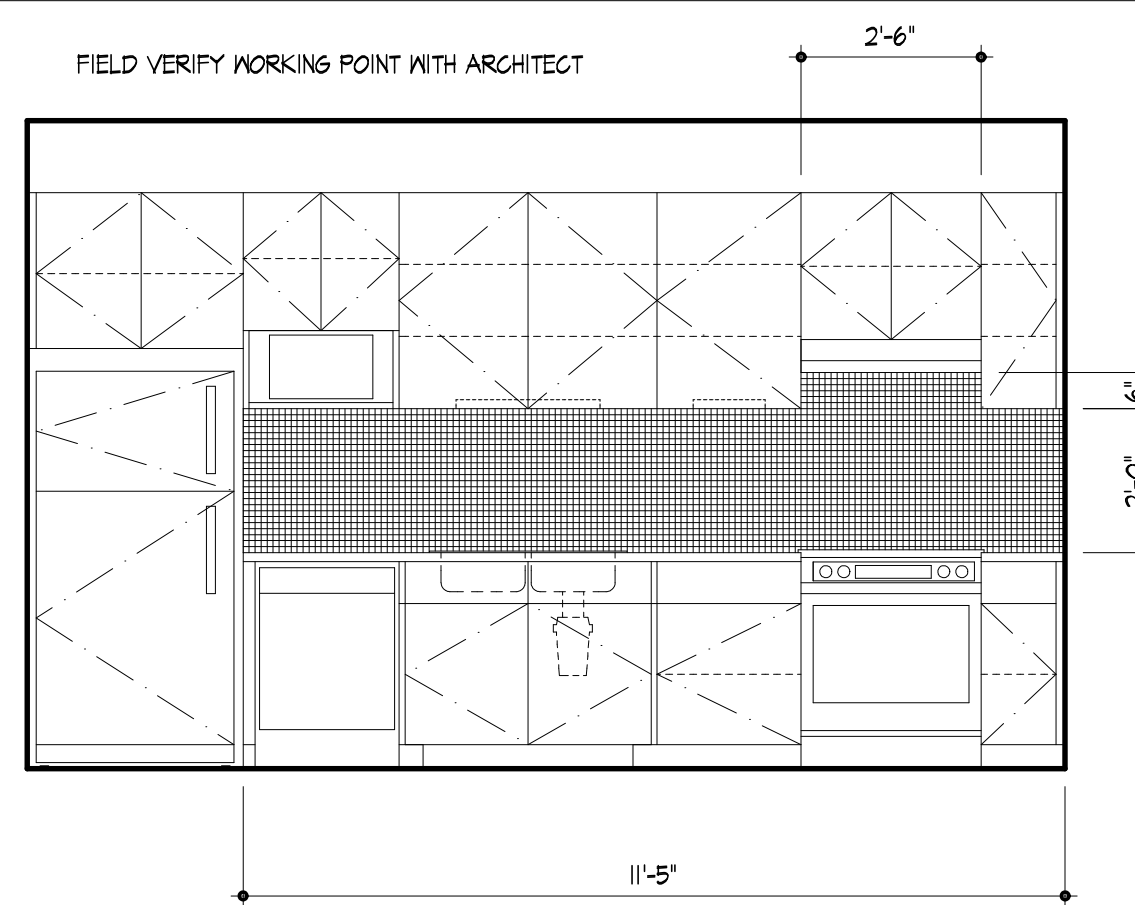
16 ELEVATION
WOMEN 120

NOT USED



17 ELEVATION
BREAK ROOM 123

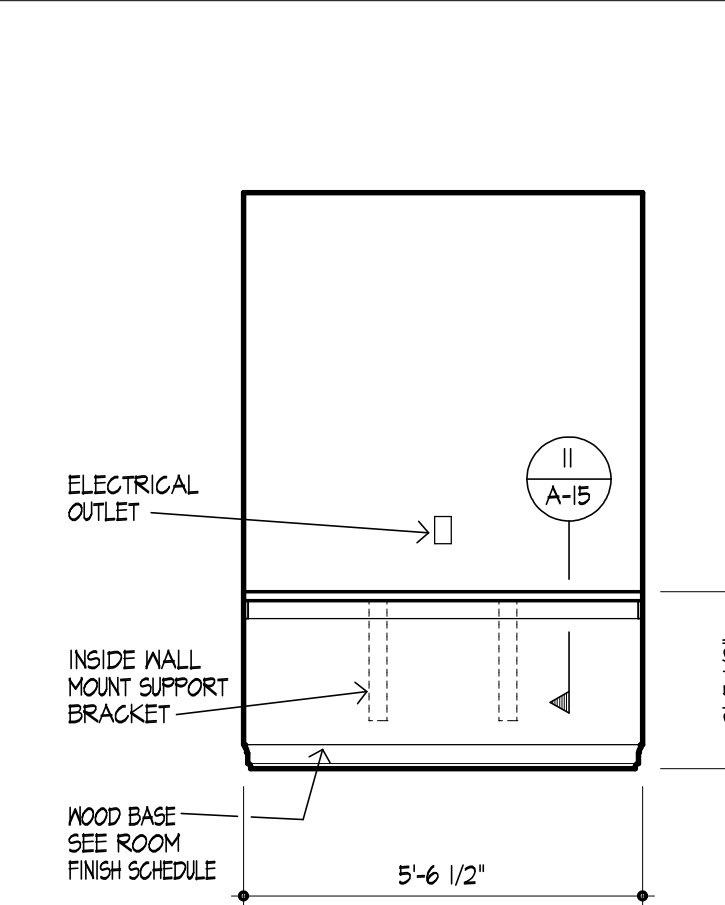
NOT USED



18 ELEVATION
STORAGE 124

RESILIENT BASE
SEE ROOM
FINISH SCHEDULE

2 EQUAL SECTIONS = 5'-8"

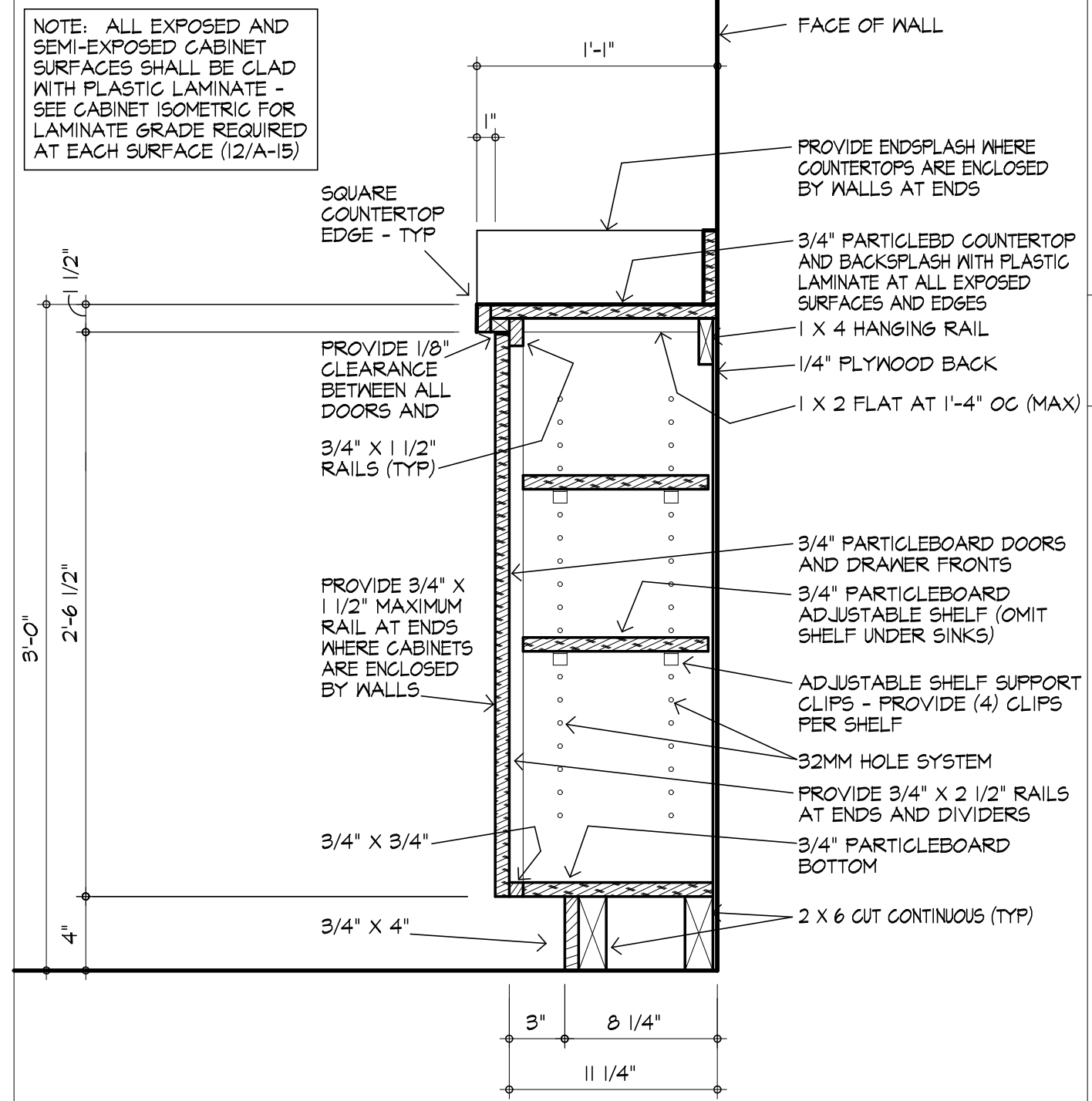


19 ELEVATION
COUPON BOOTH 126

1 DETAIL
SCALE 1/2" = 1'-0"

NOT USED

3 DETAIL
SCALE 1/2" = 1'-0"



4 DETAIL
SCALE 1/2" = 1'-0"
DOOR BASE CABINET - PLASTIC LAMINATE GLAD

2 DETAIL
SCALE 1/2" = 1'-0"

File Name: G:\2016\1612 T&F BANK DOUBLE SPRINGS\1612 WD\1612 A14 INT ELEV MILLWORK
Plot Date: 1/30/2018
Plot Time: 3:31 PM